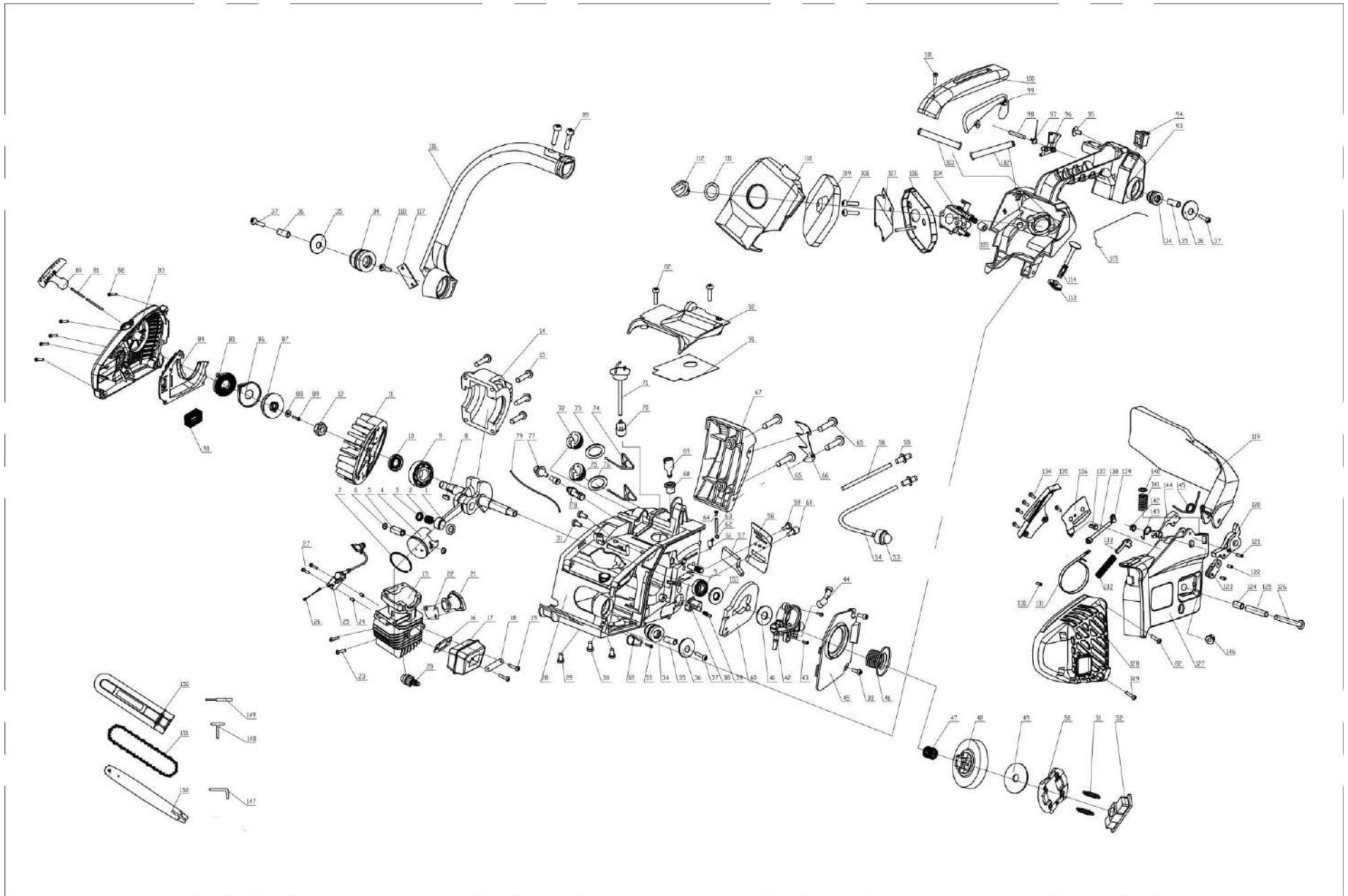


Motosierra FANTON F2500



LISTADO DE PIEZAS **F2500**

1		CRANK SHAFT ASSY	1
2		NEEDLE BEARING-BALL	1
3		RING SNAP	2
4		PISTON	1
5		PINTON PIN	1
6		SNAP RING	2
7		PINSTON RING	1
8		WOODRUFF KEY 3*10	1
9		6001 BEARING-BALL	2
10		OIL RING 12*22*5	1
11		FLY-WHEEL	1
12		SCREW M8*1	1
13		CYLINDER	1
14		SUPPORT CYLINDER	1
15		SOKET HEAD CAP SCREW M5*20	4
16		PAPER GASKET MUFFLER	1
17		MUFFLER	1
18		SHIELD-MUFFLER	1
19		SOKET HEAD CAP SCREW SCREW M5*50	2
20		SPARK PLUG	1
21		HOSE-AIR	1
22		WASHER INTAKE CARBURETOR	1
23		SOKET HEAD CAP SCREW SCREW M5×12	2
24		PAD-ELECTRIC IGNITION	2

25		IGNITION	1
26		WIRE-STOP	1
27		SCREW M4*20	2
28		FUEL TANK	1
29		PLUM BLOSSOM SLOTTED SCREW	1
30		SOKET HEAD CAP SCREW M5*20	2
31		SOKET HEAD CAP SCREW M5*16	2
32		HOOK	1
33		CROSS RECESSED PAN HEAD TAPPING SCREWS ST4.2*13	3
34		PAD RUBBER	3
35		PIN BUSH	3
36		GASKET 5X23X13	3
37		CROSS RECESSED PAN HEAD TAPPING SCREWS ST4.8x35	3
38		CHAIN CATCHER	1
39		SPECIAL-SHAPED SCREW ST5.4x15	1
40		SHIELD-OIL PUMP	1
41		WORM GEAR GASKET	1
42		OIL PUMP	1
43		SOKET HEAD CAP SCREW M4x14	2
44		HOSE-CHAIN OIL OUTGOING	1
45		SHIELD-OIL PUMP	1
46		WORM	1
47		BEARING-NEEDLE	1
48		COVER-DRUM CLUTCH	1
49		WASHER-DRUM CLUTCH	1

50		CLUTCH SHOE	2
51		SPRING CLUTCH	2
52		CLUTCH RETAINER	1
53		OIL VACUOLE	1
54		OIL VACUOLE BOOT INTAKE	1
55		TIE-IN-HOSE OIL	1
56		OIL VACUOLE OUTLET TUBE	1
57		SPONG-WASHER OIL PUMP	1
58		OIL OUTLET COVER	1
59		SCREW ST4. 2*11	1
60		SCREW ST4. 2*11 (高头)	1
61		NEGATIVE PRESSURE PIPE JOINT	1
62		SNAP RING	1
63		NEGATIVE PRESSURE PIPE	1
64		SCREW ST4. 2*9. 5	1
65		SCREW ST4. 8*13	4
66		FELLING DOG	1
67		CATCHER	1
68		SUPPORT-BALANCE	1
69		BALANCER	1
70		FUEL FILTER	1
71		HOSE OIL ASSY	1
72		OIL TANK CAP	1
73		FUEL GASKET	2
74		FUEL PAT	2
75		OIL CAP	1

76		SEALING GASKET-OIL CAP	1
77		OIL PIPE	1
78		OIL FILTER TOIL	1
79		SWITCH LINE	1
80		HANDLE-STARTER	1
81		ROPE-STARTER	1
82		CROSS RECESSED PAN HEAD TAPPING SCREWS ST4.2*16	8
83		HOUSING-STARTER	1
84		BAFFLER-FAN	1
85		SPRING-STARTER	1
86		COVER-SPRING STARTER	1
87		PULLEY-STARTER	1
88		WASHER 5x16x1	1
89		CROSS RECESSED PAN HEAD TAPPING SCREWS ST4.8x16	3
90		HOSE AIR SEAT	1
91		PAPER GASKET	1
92		COVER-TOP	1
93		BACK HANDLE	1
94		SWITCH STOP	1
95		WASHER-REAR HANDLE	1
96		TRIGGER	1
97		SPRING-TRIGGER	1
98		TRIGGER PIN 5*25	1
99		LEVER-SAFETY TRIGGER	1
100		COVER-REAR HANDLE	1

101		CROSS RECESSED PAN HEAD TAPPING SCREWS ST4. 2x19	1
102		HOSE OIL CARBURETOR	
103		CARBURETOR OUTLET TUBE	1
104		CARBURETOR	1
105		SPONG-CARBURETOR	1
106		AIR FILTER	1
107		AIR FILTER PRESSING PLATE	1
108		SOKET HEAD CAP SCREW M5x45	2
109		AIR FILTER COVER	1
110		COVER-AIR FILTER	1
111		WASHER-AIR FILTER KNOB	1
112		AIR FILTER KNOB-AIR FILTER	1
113		GROMMET-CHOKE KNOB	1
114		CHOKE KNOB	1
115		ROD THROTTLE	1
116		HANDLE	1
117		SAFETY BELT	1
118		CROSS RECESSED PAN HEAD TAPPING SCREWS ST4. 8x12	1
119		FRONT DAMPER	1
120		PUSHER-SPRING (BRAKE) B	1
121		STRAIGH PIN 3*9	1
122		STRAIGH PIN 3*14	1

123		PUSHER-SPRING (BRAKE)	1
124		PIN-LEVERAGE	1
125		FRONT DAMPER-LEVERAGE	1
126		CROSS RECESSED PAN HEAD TAPPING SCREWS M5x30	1
127		BRAKE HOUSING ASSY	1
128		SHIELD-MUFFLER	1
129		HEXAGON SOCKET SCREW M5x16	1
130		STRAIGH PIN 3*8	2
131		BAND BRAKE	1
132		SPRING-ACTUATION	1
133		BRAKE CONTROL POLE	1
134		CROSS RECESSED PAN HEAD TAPPING SCREWS ST4. 2X9. 5	5
135		COVER- BRAKE	1
136		TENSIONER COVER	1
137		TENSIONER SCREW CHAIN ADJUSTING	1
138		TENSIONER SCREW CHAIN ADJUSTING	1
139		TOOTH-CHAINADJUSTING	1
140		SUPPORT SPRING	1
141		COMPRESS SPRING-LEVERAGE	1
142		LOCK NUT M5	1
143		SPRING-LEVERAGE	1
144		LEVERAGE-BRAKE	1
145		COMPRESS SPRING-LEVERAGE	1
146		NUT M8	1

147		HEXAGON RING SPANNER T4	1
148		PLUG WRENCH SPANNER	1
149		STRAIGHT SCREWDRIVER	1
150		GUIDE BAR COVER	1
151		CHAIN	2
152		BAR	1
153		OIL RING 12*28*6	1