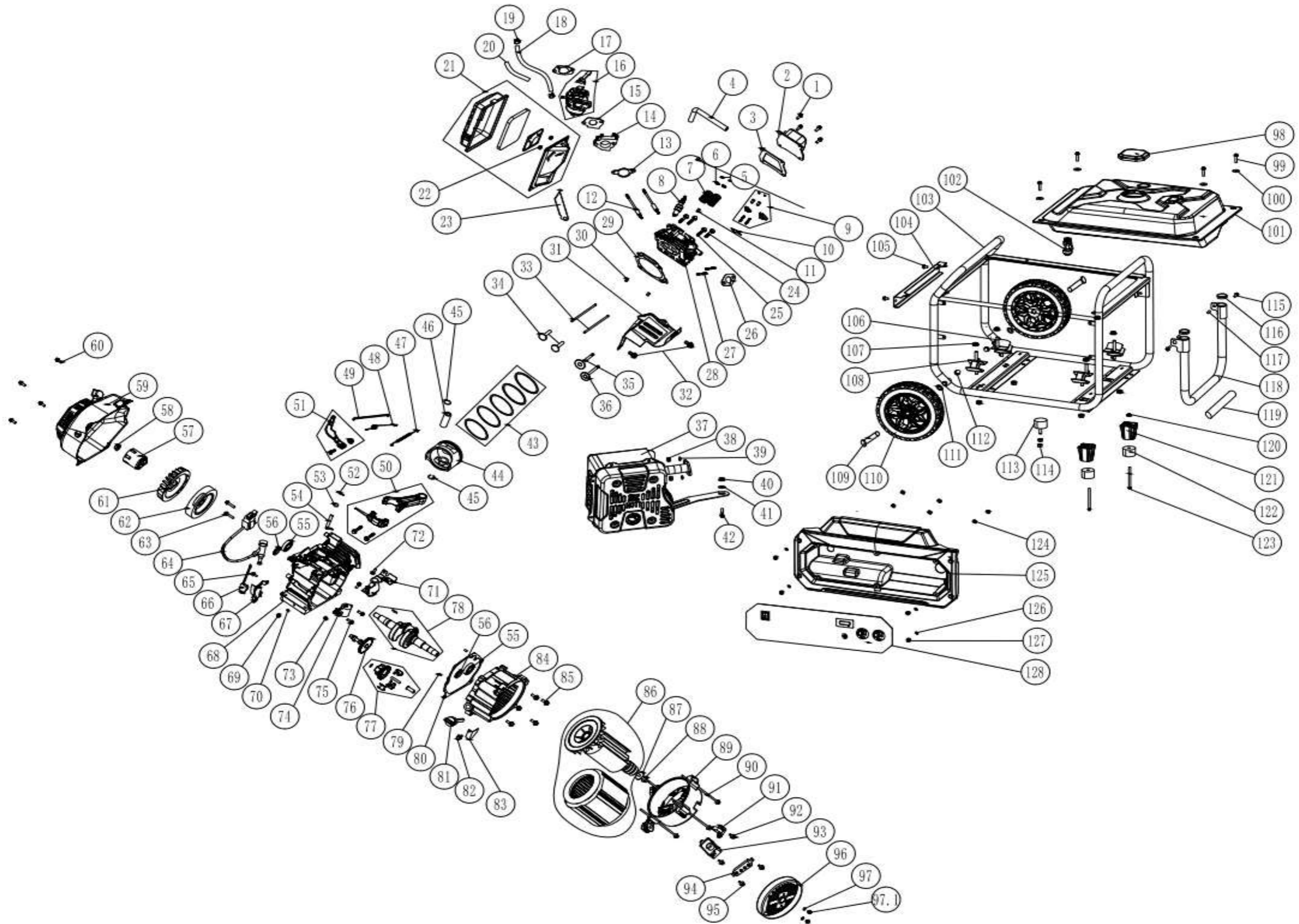


# GENERADOR SRGE4000



## SRGE4000 Generador Listado de piezas

Nº de pieza	Referencia	Description	cantidad	Order QTY	Nº de pieza	Referencia	Description	cantidad	Order QTY	Nº de pieza	Referencia	Description	cantidad	Order QTY
1	2.63.01.00180	Bolt M6*16	4		46	2.51.09.000100	Piston pin/φ13.8*φ18*54	1		91	2.56.03.002203	carbon brush	1	
2	2.50.01.003500	Cylinder head	1		47	2.54.02.000100	Throttle tension spring A	1		92	2.63.01.01806	Bolt M5*12	1	
3	2.60.09.000900	Cylinder head gasket	1		48	2.54.02.000200	Throttle tension spring B	1		93	2.56.04.000300	AVR	1	
4	2.50.13.000100	exhaust pipe φ12*φ8*144	1		49	2.54.03.002400	throttle lever	1		94	2.56.03.001701	Wiring board	1	
5	2.50.09.001300	valve adjustment cap	2		50	2.51.12.006100	Connecting rod assembly φ30*φ18*84	1		95	2.63.01.01806	Bolt M5*12	2	
6	2.50.09.000300	Exhaust valve spring seat	2		51	2.54.04.004900	Speed bracket	1		96	2.56.07.009200	Alternator back cover	1	
7	2.50.09.000100	valve spring	2		52	2.63.01.00387	cotter pin	1		97	2.63.01.01806	Bolt M5*12	2	
8	2.53.06.000200	Spark plug	1		53	2.63.01.00370	Gasket φ15*φ6*0.5	1		97.1	2.60.10.000800	Gasket φ6.2*φ10*0.8	2	
9	2.50.05.000100	rocker arm	2		54	2.51.03.001400	speed control arm	1		98	2.55.05.091702	metal fuel tank cap	1	
10	2.50.06.000100	limit plate	1		55	2.67.01.000346	Deep groove ball bearings	2		99	2.63.01.00914	Bolt M6*25	4	
11	2.51.17.005600	oil shield	1		56	2.51.17.001900	Oil seal φ41.25*φ25*6	2		100	2.63.01.01812	fuel tank connection pad	4	
12	2.63.01.01805	Intake stud M6*90	2		57	2.52.03.004300	starter cup	1		101	2.55.05.126000-4	tank	1	
13	2.60.02.000200	Air intake paper pad	1		58	2.63.01.00299	Nut M14*1.5	1		102	2.55.05.045107	fuel system accessories	1	
14	2.55.02.003100	heat shield	1		59	2.52.01.202700-11	Recoil starter	1		103	2.57.01.108030-3	Frame	1	
15	2.60.04.000200	Carburetor paper pad	1		60	2.63.01.01756	Bolt M6*12	4		104	2.57.04.029900-11	Rack rungs	1	
16	2.55.01.037300-1	carburetor	1		61	2.52.04.000200-1	impeller	1		105	2.63.01.01756	Bolt M6*12	2	
17	2.60.05.000200	Air filter gasket	1		62	2.53.01.000100	flywheel	1		106	2.61.05.006102	Right Frame damping block	2	
18	2.55.06.036018	Oil pipe φ8*φ4*150	1		63	2.63.01.00914	Bolt M6*25	2		107	2.63.01.01795	Nut M8	8	
19	2.55.07.003200	Steel wire clamp_φ8	2		64	2.53.02.000200-1	lighter	1		108	2.61.05.006101	Left Frame damping block	2	
20	2.62.01.000200	Tubing sleeve φ8.5*10	1		65	2.63.01.01750	Bolt M6*20	1		109	2.61.01.012800-1	Axle φ11*40	2	
21	2.50.11.000400-1	air filter	1		66	2.51.04.002900	one-way diode	2		110	2.61.03.010500	Wheel	2	
22	2.63.01.00291	Type 2 Hexagon Flange Nut M6			67	2.52.07.004400	lower shield	1		111	2.63.01.03877	Flat washer φ12	2	
23	2.50.14.000700	Air filter bracket	1		68	2.51.01.021200	Crankcase	1		112	2.63.01.02758	Nylon self-locking nut M10	2	
24	2.63.01.03750	Hexagon flange bolts M8*60	2		69	2.63.01.01754	Oil drain bolt M10*15*1.25	2		113	2.61.05.002600	Shock mount	1	
25	2.63.01.03751	Hexagon flange bolts M8*70	2		70	2.63.01.00497	Aluminum washer/10*15*2	2		114	2.63.01.01777	Type 1 Hex Nut M10	2	
26	2.60.03.000200	vent gasket	1		71	2.54.01.011300	Throttle control components	1		115	2.63.01.01808	Hexagon flange bolts M8*16	2	
27	2.63.01.03115	Exhaust stud M8*32	2		72	2.63.01.01756	bolt M6*12	2		116	2.61.02.047700	handle flat plug	2	

28	2.50.02.006200	cylinder head	1		73	2.63.01.01762	Hexagon flange face nut M10*1.25	1		117	2.61.02.004200	bushing	2	
29	2.60.08.006800	cylinder gasket	1		74	2.51.04.000100	oil sensor	1		118	2.61.02.052000-4	handle	1	
30	2.63.01.00406	dowel pin	2		75	2.63.01.00191	bolt M6*16	2		119	2.61.02.046600	Grip cover	1	
31	2.52.06.005300	Fairing	1		76	2.51.16.007100	camshaft	1		120	2.63.01.00291	Type 2 Hexagon Flange Nut M6	2	
32	2.63.01.02494	Hexagon flange bolts M6*12	4		77	2.51.02.000100	speed control gear	1		121	2.57.04.053900	Shock-absorbing support feet	2	
33	2.50.07.000100	Putter $\phi 5 \times \phi 4 \times 134$	2		78	2.51.15.055600	crankshaft assy	1		122	2.61.04.005000	Cushion	2	
34	2.50.08.000200	Tappet	2		79	2.63.01.00404	dowel pin	2		123	2.63.01.04079	Hexagon flange bolts M6*80	2	
35	2.50.03.000900	Intake valve	1		80	2.60.01.005200	Crankcase Gasket	1		124	2.63.01.01484	Air filter nut M5	4	
36	2.50.04.000800	exhaust valve	1		81	2.51.06.000500	oil dipstick	1		125	2.56.01.314000	Panel back cover	1	
37	2.50.12.044125-1	Muffler	1		82	2.63.01.01756	Bolt M6*12	1		126	2.63.01.00400	Iron gasket	4	
38	2.67.01.000230	Nut M8	2		83	2.56.08.002100	Alternator stopper	1		127	2.63.01.01062	Hexagon flange bolts M6*14	4	
39	2.63.01.01705	Standard spring washer $\phi 8$	2		84	2.51.05.008800	crankcase cover	1		128	2.56.01.360149	Panel	1	
40	2.63.01.01795	Nut M8	1		85	2.63.01.02743	Hexagon flange bolts $\phi 160 \times 13$	6						
41	2.63.01.01813	Flat Washers	1		86	2.56.03.042900	Alternator	1						
42	2.63.01.01570	Hexagon flange bolts M8*35	1		87	2.63.01.01813	Flat Washers	1						
43	2.51.11.005100	Piston Ring Assy	1		88	2.63.01.04001	Hexagon flange bolts M8*1*225	1						
44	2.51.08.005400	piston	1		89	2.56.05.000200	Alternator bracket	1						
45	2.51.10.000100	Piston pin retaining ring	2		90	2.63.01.03339	Hexagon flange bolts M6*170	4						